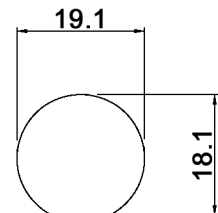
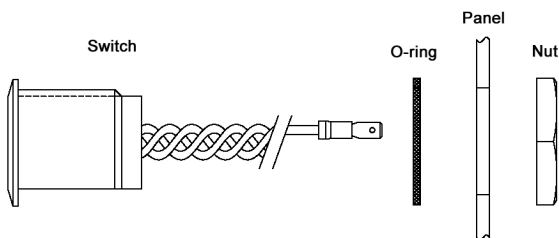


**PANEL CUT-OUT**



Panel thickness: 0.7 - 10.0



**LAYOUT**

Cable position		Power	Load (NO)	Load (NC)
$V_{in}$	red	$V_+$	$V_+$	$V_+$
$V_{out}$ (NO)	white		$V_-$	
GND	green	$V_-$		

**Specifications:**

- Contact rating: 1.5A, 5-30V DC
- Contact resistance: 20mOhm max.
- Operating temperature: -40°C to +85°C
- Electrical life: 1 000 000 cycles
- Power consumption: 10mA (max.)
- ESD resistance: +/-2kV (25 contacts) / +/-8kV (25 air discharges)
- Switch function: OFF - (ON)
- Impact resistance: IK10
- Water-proof rating: IP68 / IP66 (front panel)
- UV resistance: UVA / UVB
- LED color: blue/green
- LED power consumption: 20mA
- Activated by a finger, even with gloves
- Material: Case / key: aluminum (anodized)  
Body: PC, UL94V-0  
Cable: 22AWG, UL1007  
Glue: epoxy, white  
O-ring: foam plastic  
Nut: carbon steel, nickel plated

**Compliance: RohS III (2015/863/EU)**

Tolerances:0.00 to 10.00: ±0.05mm 10.01 to 20.00: ±0.08mm 20.01 to 30.00: ±0.10mm	Date	Name
	12/14	dr
PN / rating	01/20	dr
Revised	09/16	dr
Modifications	Date	Name

**CTK01-02-B2-T21-01N-R-BG**

**knitter-switch**

**30 32 27**

Page

1/1